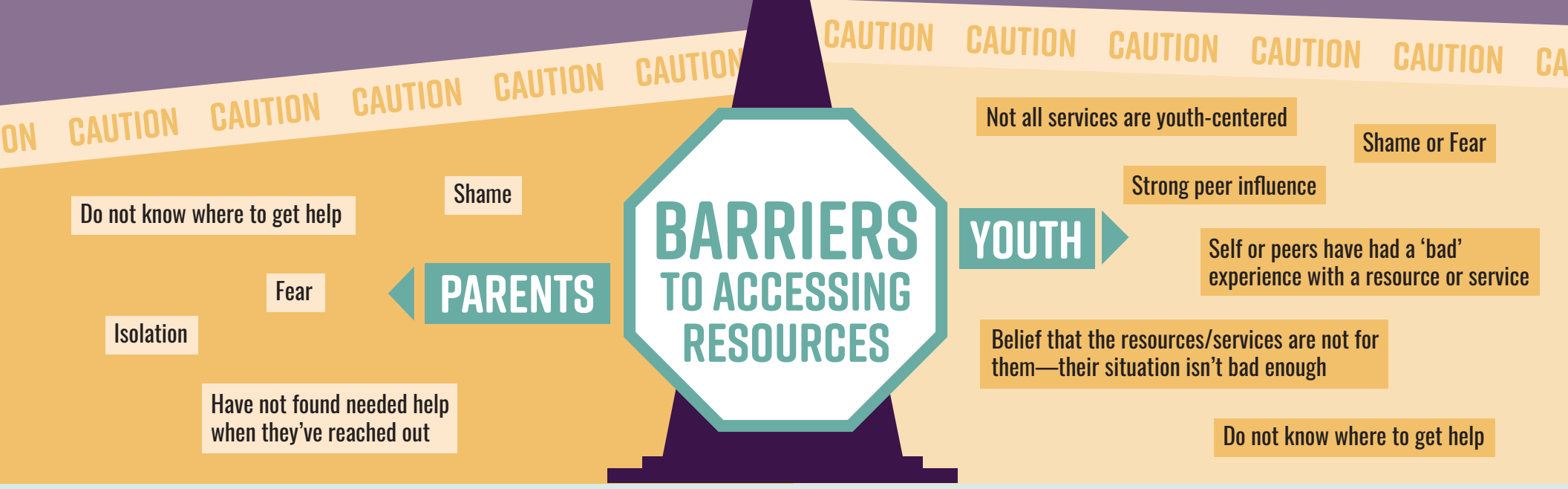


OVERCOMING HOMELESSNESS

AGES 11-17

A 35-member youth informed Task Force developed a comprehensive shelter-housing plan for unhoused youth ages 11-17. The result is a plan designed to help guide our community on a new path towards building sustainable resources, to ensure runaway and homeless youth have timely access to shelter-housing programs and support services for themselves and their parents/guardians.

PATHWAYS TO YOUTH EXPERIENCING HOMELESSNESS



OPTIONS

PREVENTION

GOAL STABILIZE HOME PLACEMENT, IF SAFE

A system of support for youth and their families who are experiencing some type of discord that may lead to a youth wanting to or being asked to leave their home. The goal is to help youth and/or their families access supportive services prior to leaving home by providing timely access to appropriate resources and services.

RESPIRE

GOAL MOVE TO STABLE HOUSING IN 30 DAYS

The plan assumes that students have accessed "prevention services" and are in need of shelter or respite housing. "Prevention" resources continue to be available for these students and their families.

TRANSITIONAL

GOAL STABLE HOUSING, SUPPORTIVE SERVICES TO HELP WITH TRANSITION TO ADULTHOOD

"Prevention" resources continue to be available to youth throughout their continuum of need. There are situations where youth are not able to return home and need longer term housing via community programming.

KEY HIGHLIGHTS

HOST HOME PROGRAM

THE HOST HOME PROGRAM is the most cost effective way to serve more youth. A key strategy for meeting the shelter-housing needs of youth in our community is to expand the "traditional" host home model to include homes for:

- Emergency-Respite placement
- Family-Kinship
- LGBTQ Specific
- Pregnant and Parenting Teens
- LatinX

We need the community in general to be committed to assisting both A Family For Every Child and Safe Families to recruit host home families.



PEER SUPPORT SERVICES

It is important that these **PEER SPECIALISTS** have lived experience that is relevant to the issues the youth and/or parent/guardian is navigating.

RECOMMENDATION Youth and Family Support Peer Specialists:

- Embedded in high schools
- Accessible 24/7 via Youth Support Center and Resource Line
- No qualifications or requirements for access to some peer support services
- Provide case management type services

Youth Support and Family Support Specialists may assist their peers with the following types of activities:

- Resource connection
- Mental health and physical health service navigation
- Social/community support connections
- Crisis support

Agencies currently providing these types of services: Looking Glass Community Services, Youth Era, Centro Latino Americano and Direction Service

YOUTH SUPPORT CENTER

YOUTH SUPPORT CENTERS were initially developed for youth and their parents/guardians who are involved with the juvenile justice system and need crisis mitigation and a "warm hand-off" to community resources and services. We are recommending that we broaden the population scope to include all youth and parents/guardians who need this type of support.

The Youth Support Center would include a 24/7 resource phone line that youth and parents/guardians can access by calling or texting. No appointment necessary to access services on site at the Center.

The types of support that would be available are:

- De-escalation
- Crisis mitigation
- Family/guardian reconnection
- Initial needs assessment
- Connection to community services
- Transportation to home or shelter

Agency: White Bird Clinic

INVESTING OUTCOMES

UNACCOMPANIED YOUTH IN OREGON

OREGON HAS THE **1ST** HIGHEST RATE* OF YOUTH HOMELESSNESS IN THE U.S.

OREGON HAS THE **2ND** HIGHEST RATE OF UNACCOMPANIED HOMELESS YOUTH

2018-2019 SCHOOL YEAR **3,700** HIGHEST RATE OF UNACCOMPANIED HOMELESS YOUTH



OREGON'S HIGH SCHOOL GRADUATION RATE FOR HOMELESS STUDENTS IS ONLY

54%

YOUTH WHO DO NOT FINISH HIGH SCHOOL OR A GED ARE

2X

MORE LIKELY TO FACE UNEMPLOYMENT AS ADULTS



FOR EVERY \$1 INVESTED IN RHY PROGRAMS FOR HOMELESS YOUTH, OREGON SAVES \$4

STUDENT OUTCOMES